

Safe Streets For All

City of Hollister
Public Works
Cassandra Orozco
October 20, 2025



Safe System Approach

- Prioritizes human life and proactive safety strategies
- Five E's—Engineering, Education, Enforcement, Encouragement, and Evaluation
- Safety as a Public Health Priority
- Comprehensive, Inclusive Community Engagement
- Data Analysis
- Disadvantaged Communities and Hazard Risk
- Scalable and Actionable Implementation Plan



STAKEHOLDER OUTREACH

- Stakeholder Mapping & Engagement Plan
 - Government agencies, advocacy groups, law enforcement, school administrators, and community-based organizations
- Integrating Community Feedback into the Planning Process
 - Engagement Phase 1: Needs Identification
 - Engagement Phase 2: Solution Development
 - Engagement Phase 3: Public Review

Improving Road Safety Mejorando la Seguridad de las Calles

2023 Priority Safety Corridors Corredores de Seguridad Prioritarios Para 2023



Scan QR code to learn more about the project and project-related events.



Escanee el código QR para obtener más información sobre el proyecto y los eventos relacionados con el proyecto.

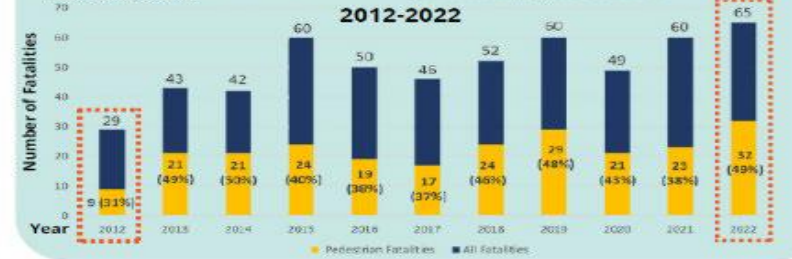


San José Traffic Fatalities

Traffic fatalities have doubled and pedestrian fatalities have tripled over the last 10 years. Pedestrian / people walking is the biggest group of traffic fatality victims.

Muertes de tránsito en San José

Las muertes de tráfico se han duplicado y las muertes de peatones se han triplicado en los últimos 10 años. Los peatones/personas que caminan son el grupo más grande de víctimas fatales de tránsito.



Speeding is the Top Known Factor Leading To Traffic Fatalities (2018-2022)

El Exceso de Velocidad es el Principal Factor Conocido en las Muertes por Accidentes de Tráfico (2018-2022)

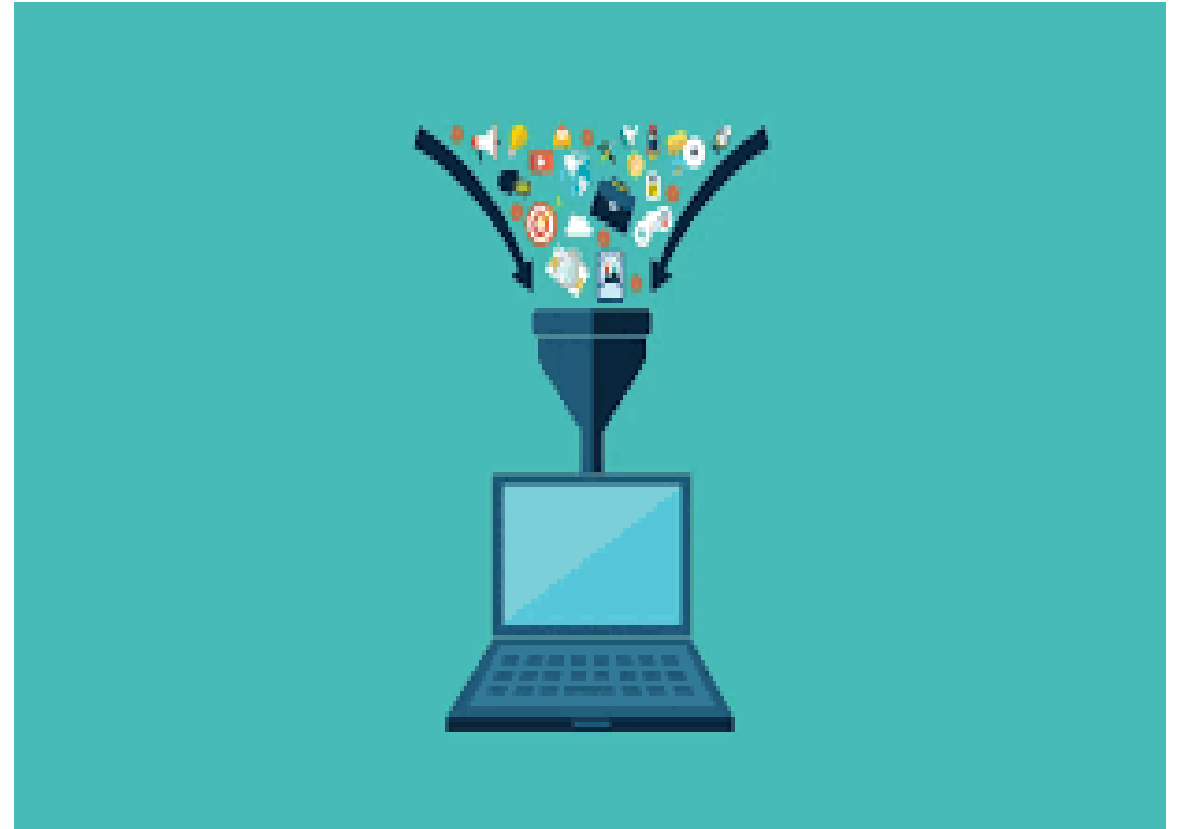


The City of San José Vision Zero • 200 E. Santa Clara St., San José CA 95113 • traffic.safety@sanjoseca.gov • www.visionzerosj.org



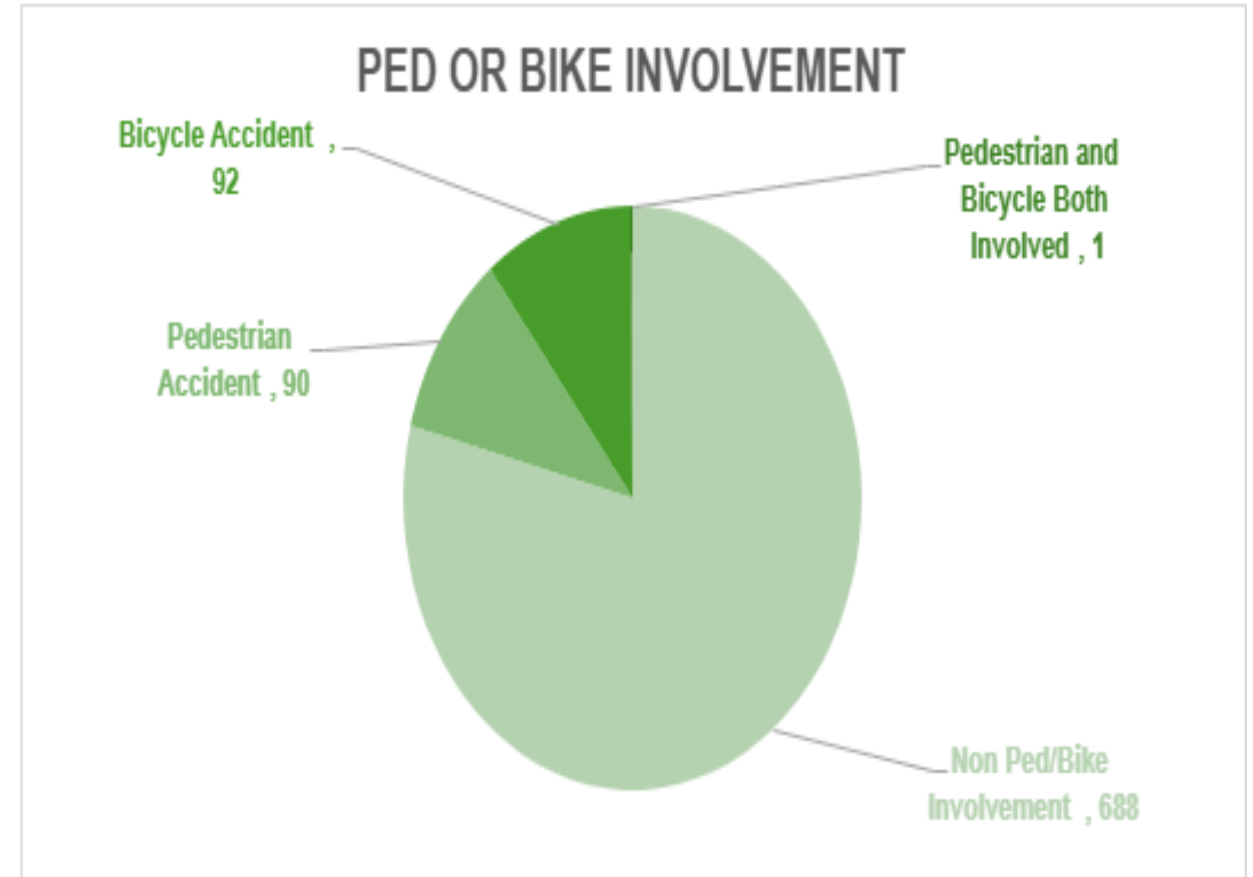
DATA COLLECTION

- Crash Data
- Field Review
- Multimodal Traffic Counts
- Travel Behavior and Congestion Data
- Roadway Characteristics
- Transit Ridership Data
- Equity and Demographic Data
- School-Related Data
- Park Access and Usage Data
- Environmental Risk Data
- Document Review



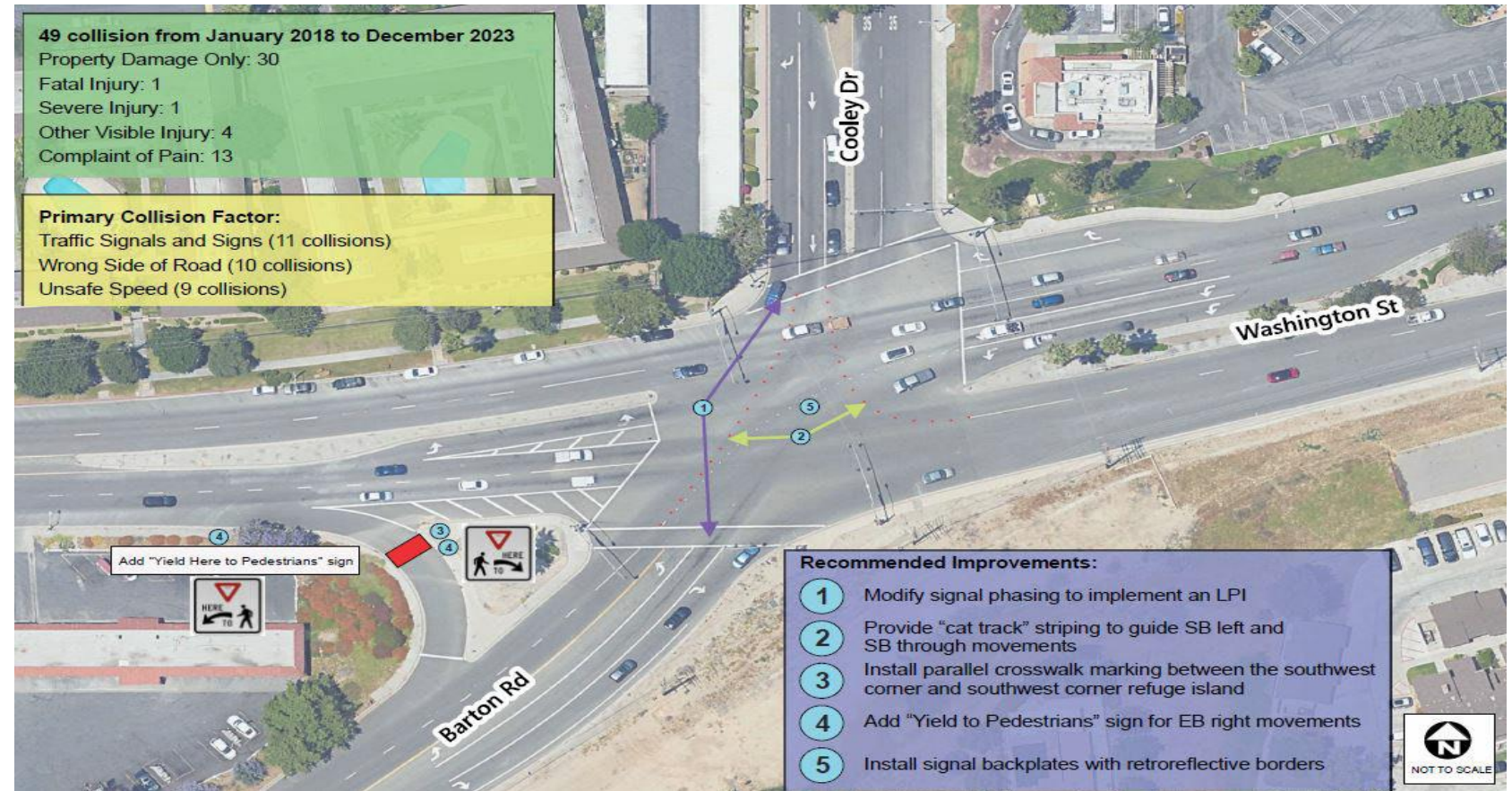
DATA ANALYSIS/NEEDS ASSESSMENT

- Crash Analysis and Safety Trends
- City of Hollister - Crash and Outcome Analysis
- Pedestrian and Bicycle Crash Involvement
- Multimodal and Travel Behavior Analysis
- Disadvantaged Communities Assessment
- Rail Crossing Analysis
- Infrastructure and Roadway Conditions Review
- School and Park Zone Safety Assessment
- Wildfire-Prone Areas Assessment
- State Highway Assessment



HOT SPOT/ NEEDS IDENTIFICATION AND PRIORITIZATION

- Initial Countermeasure List
- Prioritized Countermeasures
- Tiered Project Prioritization Framework
- Multi-Benefit Approach: Health, Safety, and Mobility



SCALABLE AND ACTIONABLE IMPLEMENTATION PLAN

- Tiered Project Prioritization Framework
 - Tier 1: Near- Term/Quick-Build Improvements (0 – 2 years)
 - Tier 2: Medium-Term Strategies (2 – 5 years)
 - Tier 3: Long-Term Strategies (> 5 years)
- Multi-Benefit Approach: Health, Safety, and Mobility
 - Active transportation
 - Impaired driving prevention
 - Air quality and stress reduction



POLICIES & DOCUMENTATION OF FINDINGS

- A Safety-First Culture
- Assessment of Existing Policies and Standards
- Gap Analysis and Opportunities
- Policy Recommendations
- Draft Plan
- Final Plan
- Monitoring Dashboard

